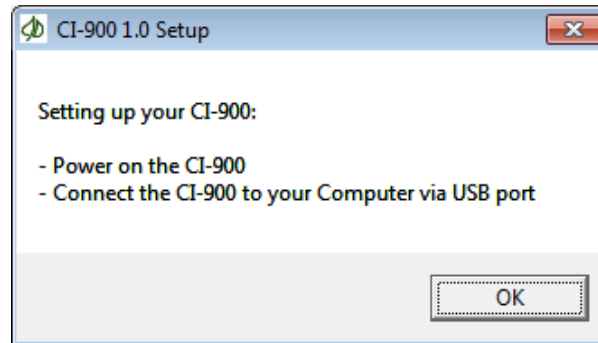
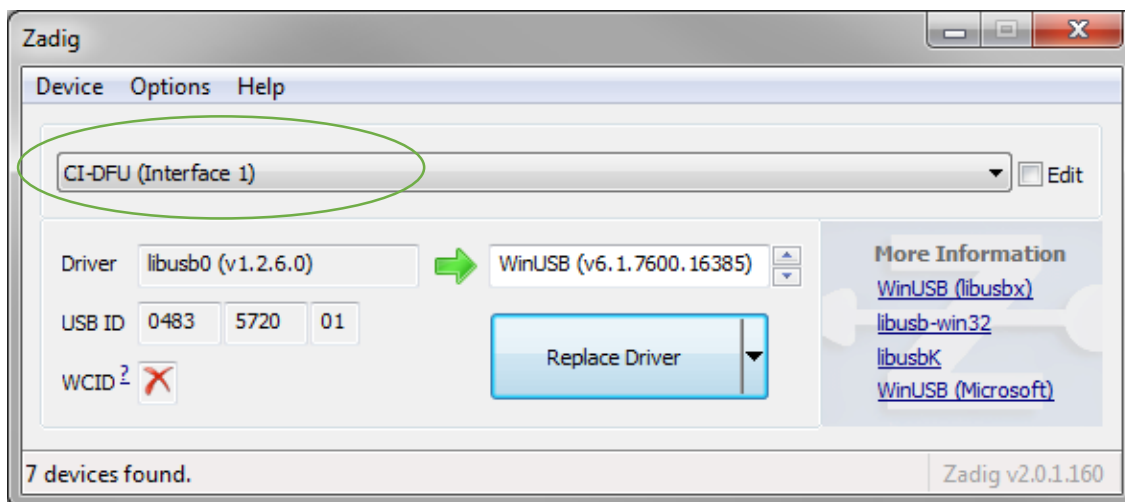
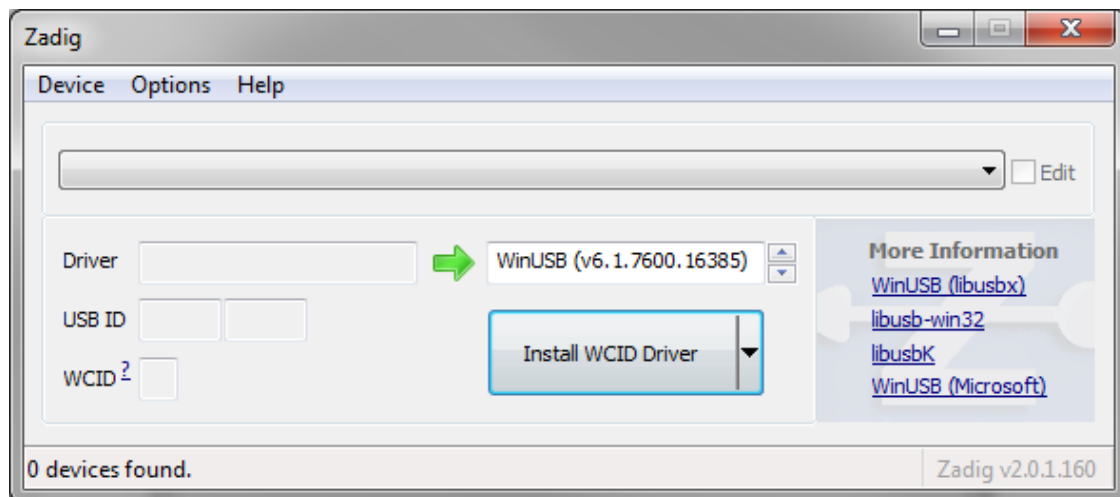


## CI-900 software Installation Instruction

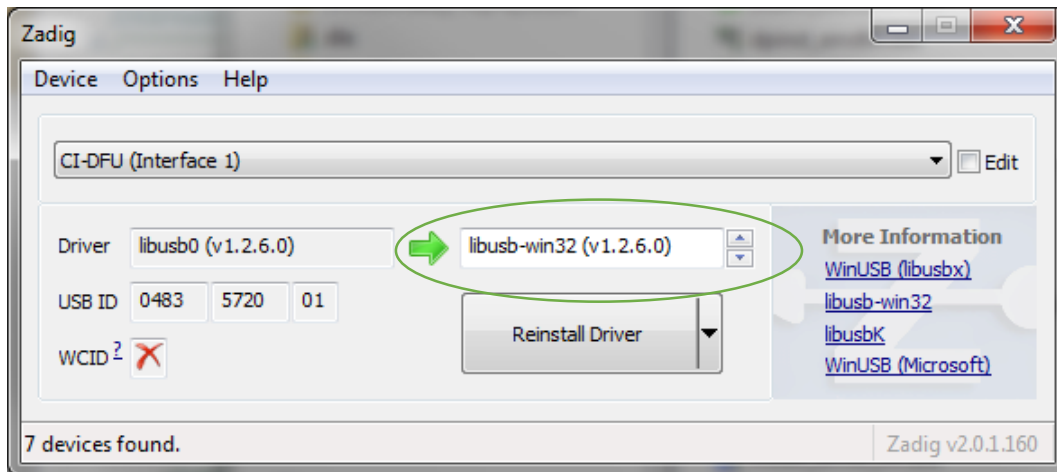
1. Launch CI-900\_Package\_Setup\_VX.X.exe
2. Set up device as prompted message below



3. Device requires libusb driver to operate. In Zadig window, select Options/List All Devices. In the dropdown list select CI-DFU (Interface 1) device.

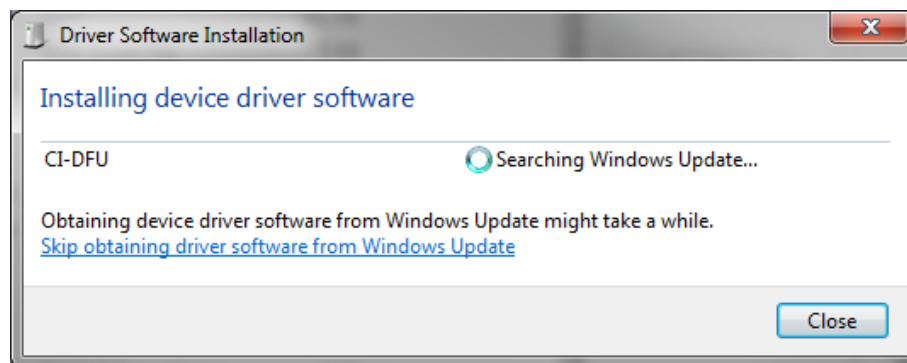


At the spinner list (green arrow), select libusb-win32



Click *Install Driver* to proceed installing libusb driver. This could take up to 1 minute to complete.

**\*Please note that you may need to wait for Windows obtaining driver process below to complete before click *Install driver*.**



4. Device drivers and Software package installation is done. Under Windows Start menu, you should be able to find shortcuts for Device's Controller and Firmware Upgrade Program.

